



Tri-Phase
Intelligent Industrial Drying

Tri-Phase technology saves 25 to 75% of your drying energy use.

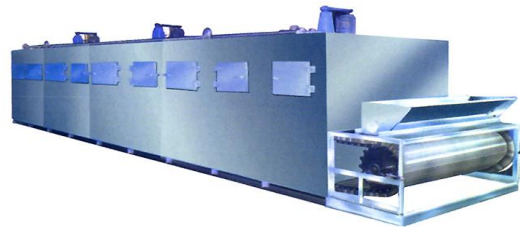
Ultra efficient heat recovery options include innovative heat pump technology for new dryers and for retrofitting to your existing dryers.

With the Tri-Phase technology, what's good for the environment is even better for the bottom line.

Retrofit Your Current Dryer with Innovative Heat Pump Technology



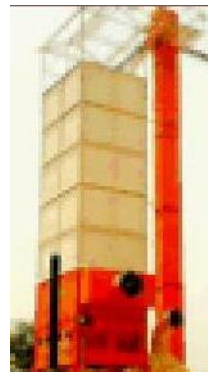
Rotary Drum Dryer



Belt Conveyor Dryer

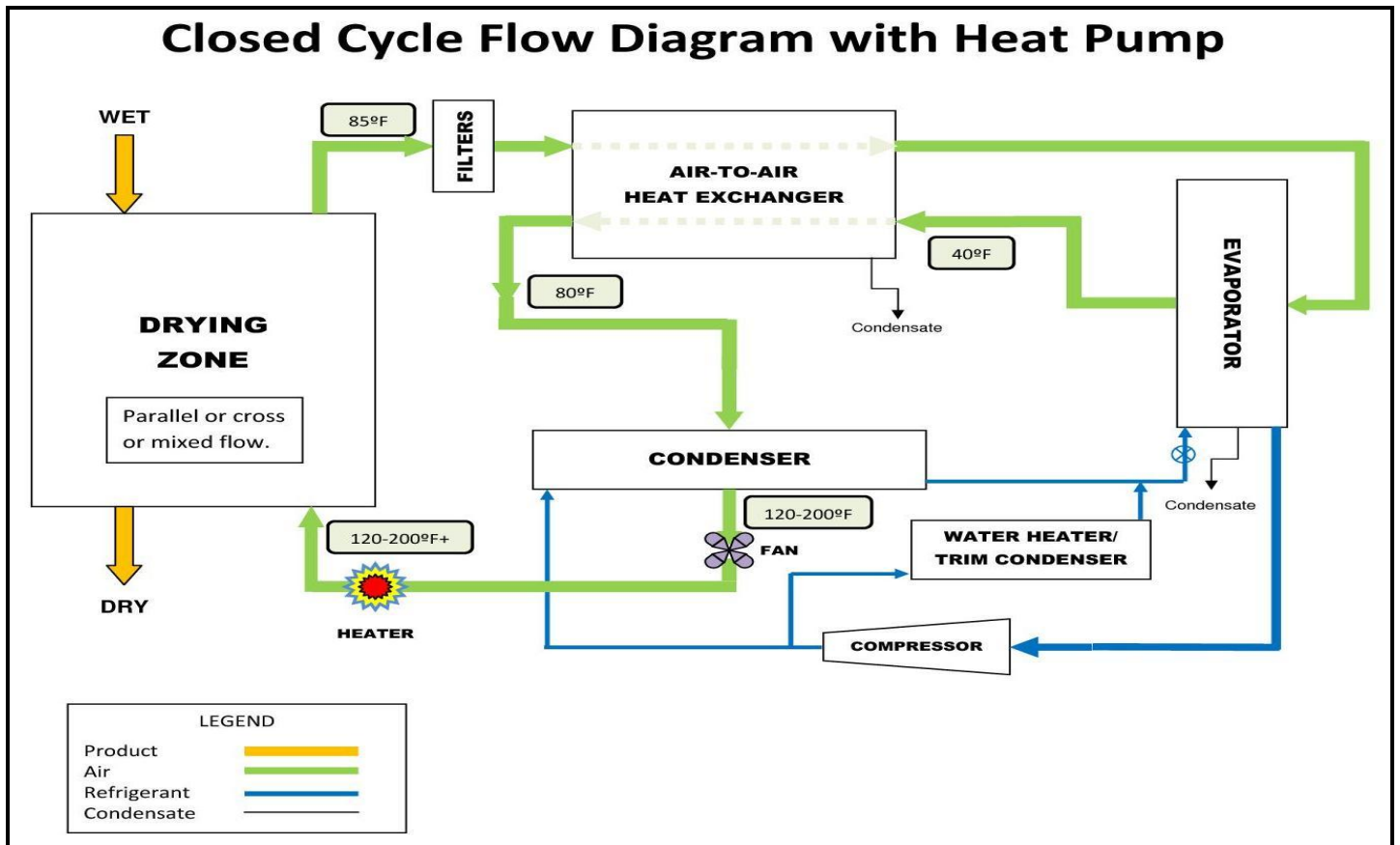
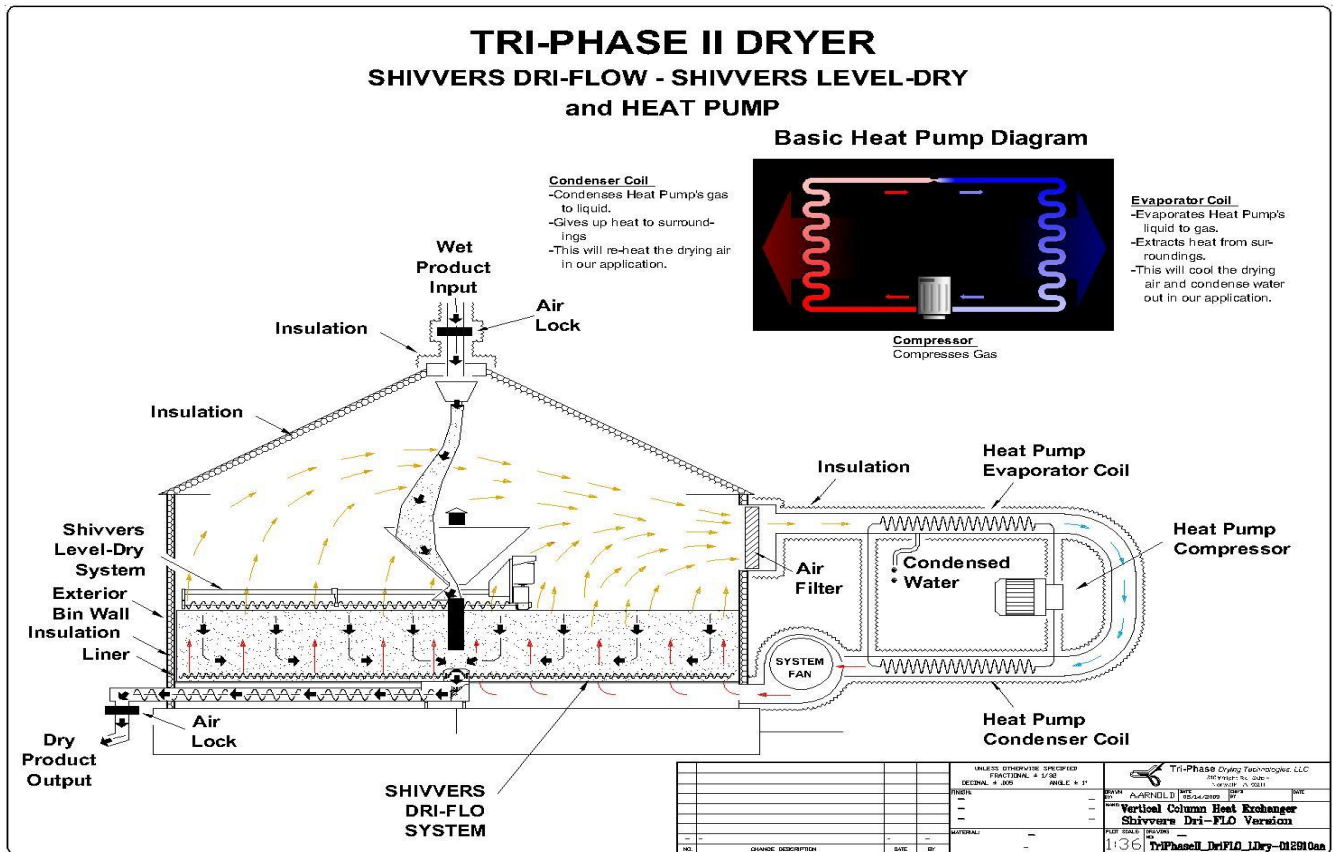


Fluidized Bed Dryer



Vertical Cascade Tray Dryer

New Tri-Phase Dryers for Grains, Oil Seeds, and Particulatates



Energy Consumed by Some Common Dryer Types

	<u>Btu/lb of water evaporated</u>
Inefficient Industrial Dryers	4,000
Typical Cross Flow Grain Dryers	2,400 – 3,000
Typical “average” Industrial Dryers	2,000
Efficient Industrial Dryers	1,200 – 1,400
Tri-Phase	500 – 600

Nominal 75% Energy Savings over Conventional Dryers

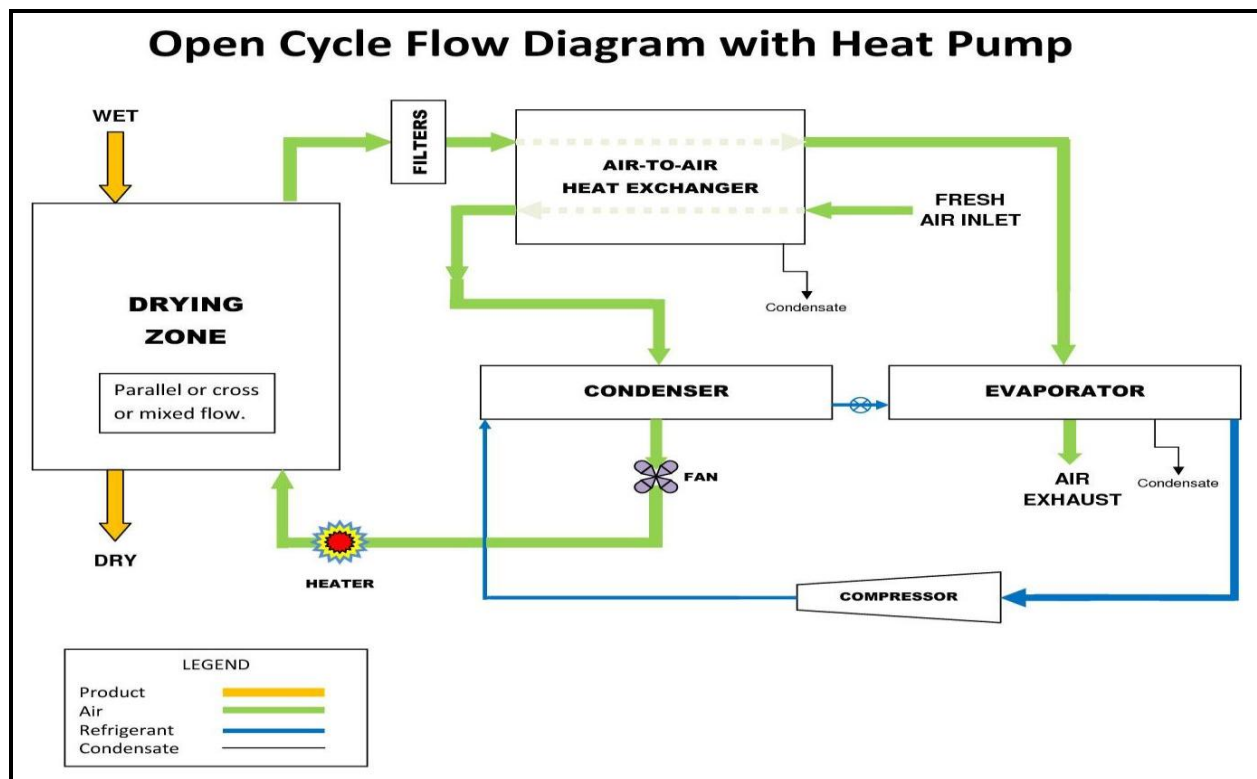
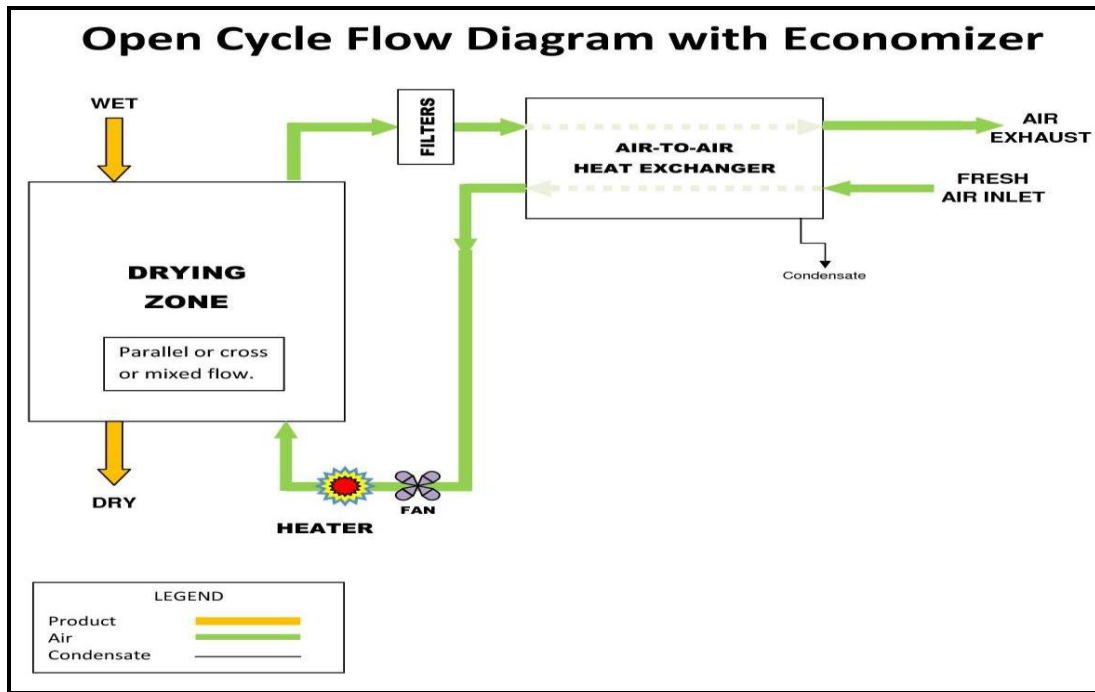
Tri-Phase Drying Technologies offers:

Benefits	<u>Existing Dryer Retrofits</u>	<u>Tri-Phase II New Dryers</u>
● 25 - 75% Dryer Energy Savings	X	X
● Low Heat Duty: 500 - 600 Btu/pound of water evaporated	X	X
● Open Cycle Drying Option - Low temperature exhaust air with low concentration of volatiles and odors	X	X
● Closed Cycle Drying Option - No air emissions, improved aroma and fuel value of products such as wood pellets	X	X
● Low Temperature Drying Option - Maximum product quality and no “bake on” to equipment surfaces	X	X
● Precise Control of Drying Air Temperature & Humidity	same as original	X
● Very Uniform Drying of Product	same as original	X
● Precise Moisture Control	same as original	X
● Fully Automatic	same as original	X
● Payback Time of 2 – 3 Years in many cases	X	X

Services

- Retrofitting Existing Dryers: Belt conveyor, rotary drum, hopper/column, fluidized bed, vertical cascade, multi-tray types, and others
- New Equipment and System Sales
- Engineering Services

Ideal for the drying of extruded food/feed products, aquatic foods, pet foods, snack foods, textured soy protein, seeds, grains, oil seeds (soy, canola, rape), popcorn, rice, sawdust, wood and biomass chips and pellets.



**Interested in saving money?
Let us show you what we can do for your bottom line.**

Tri-Phase Drying Technologies
340 Wright Road, Suite H, Norwalk, IA 50211
515-468-3923 or steve@triphasedrying.com
www.triphasedrying.com